



# MONTCLAIR

Elevation C

1,689 sq ft



3 Beds



2 Baths



1 Story

DOWNLOAD FREE DIGITAL PLAN BOOK: [www.mitchellhomesinc.com](http://www.mitchellhomesinc.com)



Elevation A



# MONTCLAIR 1,689 sq ft

Total Living Area: 1,689 sq ft

Covered Porch: 511 sq ft

Total Area: 2,200 sq ft

## SALES & DESIGN CENTER LOCATIONS

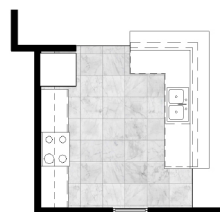
Fredericksburg, VA  
888-905-0266

Newport News, VA  
888-608-0603

Richmond, VA  
888-352-0702

Rocky Mount, NC  
888-512-3779

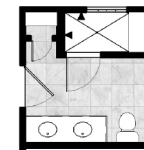
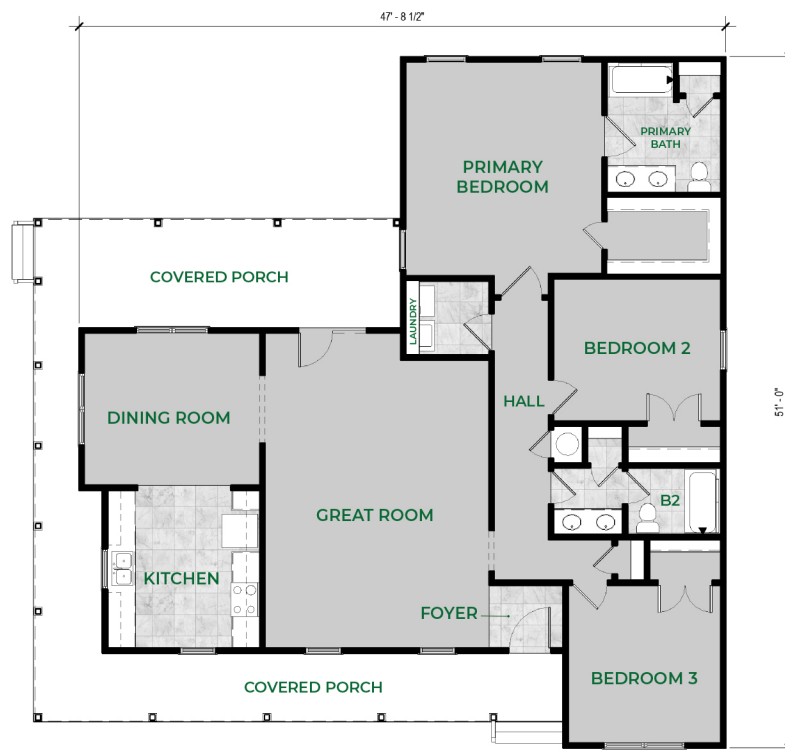
info@mitchellhomesinc.com



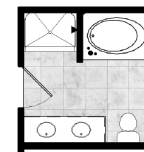
OPTIONAL  
KITCHEN LAYOUT



OPTIONAL CHEF'S  
KITCHEN LAYOUT



LUXURY PRIMARY  
BATH LAYOUT



OPTIONAL PRIMARY  
BATH LAYOUT

Plans and elevations are artist's renderings only, may not accurately represent the actual condition of a home as constructed, and may contain options which are not standard on all models. We reserve the right to make changes to these floor plans, specifications, dimensions, and elevations without prior notice. Stated dimensions and square footage are approximate and should not be used as representation of the home's precise or actual size.