



Elevation D

ALBEMARLE 2,420 sq ft



3 Beds



3 Baths



1 Story

DOWNLOAD FREE DIGITAL PLAN BOOK: www.mitchellhomesinc.com



Elevation A



Elevation B

ALBEMARLE 2,420 sq ft

Living Area: 2,420 sq ft

Covered Porch: 116 sq ft

Garage: 648 sq ft

Stoop: 18 sq ft

Total Area: 3,202 sq ft

SALES & DESIGN CENTER LOCATIONS

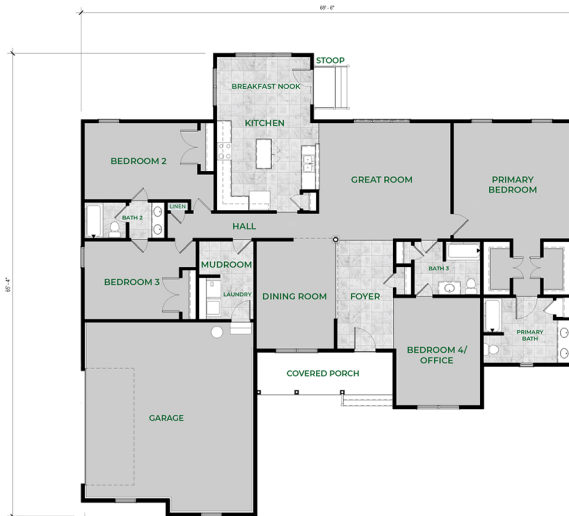
Fredericksburg, VA
888-905-0266

Newport News, VA
888-608-0603

Richmond, VA
888-352-0702

Rocky Mount, NC
888-512-3779

info@mitchellhomesinc.com



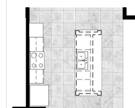
OPTIONAL PRIMARY BATH LAYOUT



LUXURY PRIMARY BATH LAYOUT



OPTIONAL KITCHEN LAYOUT



OPTIONAL CHEF'S KITCHEN LAYOUT

Plans and elevations are artist's renderings only, may not accurately represent the actual condition of a home as constructed, and may contain options which are not standard on all models. We reserve the right to make changes to these floor plans, specifications, dimensions, and elevations without prior notice. Stated dimensions and square footage are approximate and should not be used as representation of the home's precise or actual size.