



ASHLEY

Elevation A
1,871 sq ft



3 Beds



2 Baths



2 Stories

DOWNLOAD FREE DIGITAL PLAN BOOK: www.mitchellhomesinc.com



Elevation B

ASHLEY 1,871 sq ft

First Floor: 917 sq ft

Second Floor: 954 sq ft

Total Living Area: 1,871 sq ft

Garage: 452 sq ft

Unfinished Bonus Room: 190 sq ft

Stoop: 18 sq ft

Covered Porch: 37 sq ft

Total Area Under Roof: 2,568 sq ft

SALES & DESIGN CENTER LOCATIONS

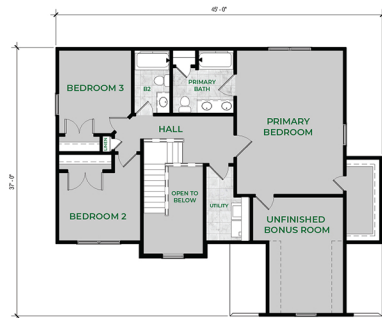
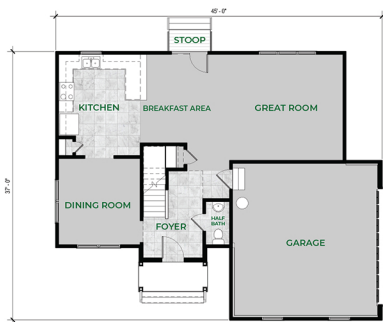
Fredericksburg, VA
888-905-0266

Newport News, VA
888-608-0603

Richmond, VA
888-352-0702

Rocky Mount, NC
888-512-3779

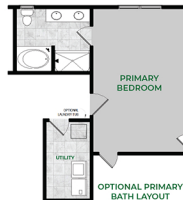
info@mitchellhomesinc.com



OPTIONAL CHEF'S KITCHEN LAYOUT



OPTIONAL KITCHEN LAYOUT



OPTIONAL PRIMARY BATH LAYOUT



LUXURY PRIMARY BATH LAYOUT

Plans and elevations are artist's renderings only, may not accurately represent the actual condition of a home as constructed, and may contain options which are not standard on all models. We reserve the right to make changes to these floor plans, specifications, dimensions, and elevations without prior notice. Stated dimensions and square footage are approximate and should not be used as representation of the home's precise or actual size.