



# CAROLINE

1,293 sq ft



3 Beds



2 Baths



1 Story

DOWNLOAD FREE DIGITAL PLAN BOOK: [www.mitchellhomesinc.com](http://www.mitchellhomesinc.com)



Elevation C



Elevation A



Elevation B

# CAROLINE 1,293 sq ft

Living area: 1,293 sq ft

Covered Porch: 59 sq ft

**Total Area Under Roof: 1,352 sq ft**

Stoop: 12 sq ft

**Total Area: 1,364 sq ft**

## SALES & DESIGN CENTER LOCATIONS

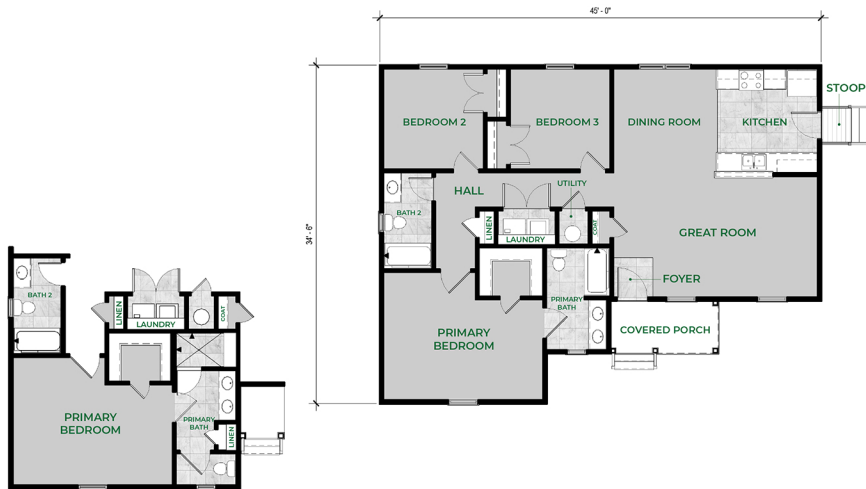
Fredericksburg, VA  
888-905-0266

Newport News, VA  
888-608-0603

Richmond, VA  
888-352-0702

Rocky Mount, NC  
888-512-3779

[info@mitchellhomesinc.com](mailto:info@mitchellhomesinc.com)



LUXURY PRIMARY BATH LAYOUT WITH ADDITION

Plans and elevations are artist's renderings only, may not accurately represent the actual condition of a home as constructed, and may contain options which are not standard on all models. We reserve the right to make changes to these floor plans, specifications, dimensions, and elevations without prior notice. Stated dimensions and square footage are approximate and should not be used as representation of the home's precise or actual size.