



Elevation C

CHESAPEAKE 1,861 sq ft



3 Beds



2 Baths



2 Stories

DOWNLOAD FREE DIGITAL PLAN BOOK: www.mitchellhomesinc.com



Elevation A



Elevation B

CHESAPEAKE 1,861 sq ft

1st Floor: 1,112 sq ft

2nd Floor: 749 sq ft

Total Living Area: 1,861 sq ft

Covered Porch: 240 sq ft

Total Area Under Roof: 2,101 sq ft

Stoop: 12 sq ft

Total: 2,113 sq ft

SALES & DESIGN CENTER LOCATIONS

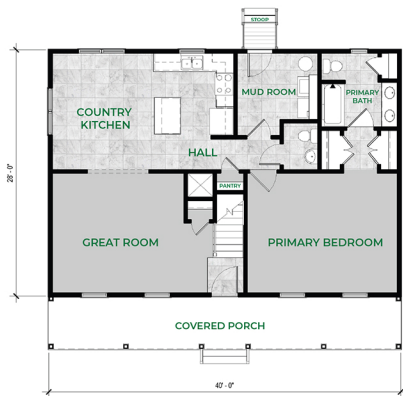
Fredericksburg, VA
888-905-0266

Newport News, VA
888-608-0603

Richmond, VA
888-352-0702

Rocky Mount, NC
888-512-3779

info@mitchellhomesinc.com



Plans and elevations are artist's renderings only, may not accurately represent the actual condition of a home as constructed, and may contain options which are not standard on all models. We reserve the right to make changes to these floor plans, specifications, dimensions, and elevations without prior notice. Stated dimensions and square footage are approximate and should not be used as representation of the home's precise or actual size.