



FAIRFAX

Elevation A

2,181 sq ft 



4 Beds



2.5 Baths



2 Stories

DOWNLOAD FREE DIGITAL PLAN BOOK: www.mitchellhomesinc.com 



Elevation B

FAIRFAX 2,181 sq ft

1st Floor: 1,030 sq ft

2nd Floor: 1,151 sq ft

Total Living Area: 2,181 sq ft

Garage: 494 sq ft

Covered Porch: 194 sq ft

Stoop: 18 sq ft

Total Area: 2,887 sq ft

SALES & DESIGN CENTER LOCATIONS

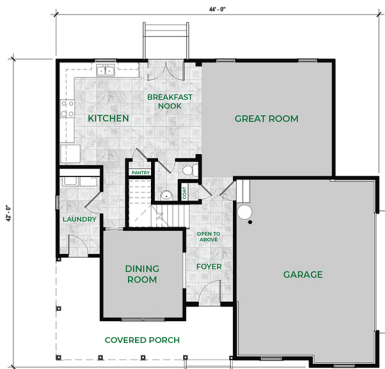
Fredericksburg, VA
888-905-0266

Newport News, VA
888-608-0603

Richmond, VA
888-352-0702

Rocky Mount, NC
888-512-3779

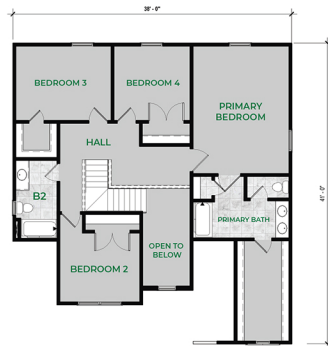
info@mitchellhomesinc.com



OPTIONAL CHEF'S KITCHEN LAYOUT



OPTIONAL B2 LAYOUT



OPTIONAL PRIMARY BATH LAYOUT



LUXURY PRIMARY BATH LAYOUT

Plans and elevations are artist's renderings only, may not accurately represent the actual condition of a home as constructed, and may contain options which are not standard on all models. We reserve the right to make changes to these floor plans, specifications, dimensions, and elevations without prior notice. Stated dimensions and square footage are approximate and should not be used as representation of the home's precise or actual size.