







FRANKLIN Elevation B
 1,439 sq ft 
 3/4 Beds  2.5 Baths  2 Stories

DOWNLOAD FREE DIGITAL PLAN BOOK: www.mitchellhomesinc.com 



Elevation A

FRANKLIN 1,439 sq ft

First Floor: 932 sq ft

Second Floor: 507 sq ft

Total Living Area: 1,439 sq ft

Unfinished Bonus Room: 127 sq ft

Covered Porch: 30 sq ft

Stoop: 12 sq ft

Total Area: 1,608 sq ft

SALES & DESIGN CENTER LOCATIONS

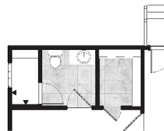
Richmond, VA
888-352-0702

Fredericksburg, VA
888-905-0266

Newport News, VA
888-608-0603

Rocky Mount, NC
888-512-3779

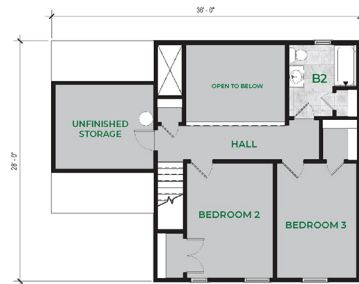
info@mitchellhomesinc.com



LUXURY PRIMARY BATH WITH REAR ADDITION LAYOUT



OPTIONAL 4TH BEDROOM LAYOUT



Plans and elevations are artist's renderings only, may not accurately represent the actual condition of a home as constructed, and may contain options which are not standard on all models. We reserve the right to make changes to these floor plans, specifications, dimensions, and elevations without prior notice. Stated dimensions and square footage are approximate and should not be used as representation of the home's precise or actual size.