



# OAKTON

Elevation B

1,464 sq ft 



3 Beds



2 Baths



1 Story

DOWNLOAD FREE DIGITAL PLAN BOOK: [www.mitchellhomesinc.com](http://www.mitchellhomesinc.com) 



Elevation A

# OAKTON

1,464 sq ft

Total Living Area: 1,464 sq ft

Covered Porch: 96 sq ft

Stoop: 16 sq ft

Total Area: 1,576 sq ft

## SALES & DESIGN CENTER LOCATIONS

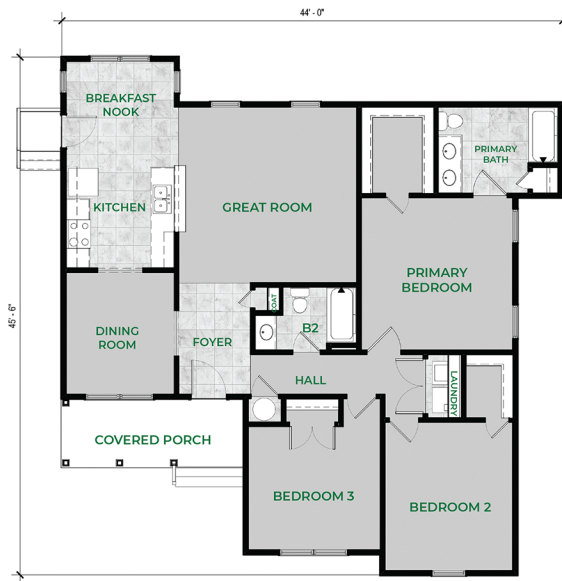
Fredericksburg, VA  
888-905-0266

Newport News, VA  
888-608-0603

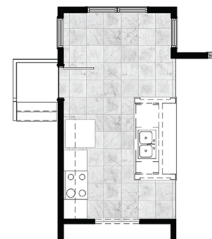
Richmond, VA  
888-352-0702

Rocky Mount, NC  
888-512-3779

info@mitchellhomesinc.com



LUXURY PRIMARY BATH LAYOUT



OPTIONAL CHEF KITCHEN LAYOUT

Plans and elevations are artist's renderings only, may not accurately represent the actual condition of a home as constructed, and may contain options which are not standard on all models. We reserve the right to make changes to these floor plans, specifications, dimensions, and elevations without prior notice. Stated dimensions and square footage are approximate and should not be used as representation of the home's precise or actual size.