



# CHESAPEAKE 2

2,026 sq ft



4 Beds



2 Baths



2 Stories

DOWNLOAD FREE DIGITAL PLAN BOOK: [www.mitchellhomesinc.com](http://www.mitchellhomesinc.com)



Elevation B



Elevation A

# CHESAPEAKE 2 2,026 sq ft

1st Floor: 1,112 sq ft

2nd Floor: 914 sq ft

**Total Living Area: 2,026 sq ft**

Covered Porch: 240 sq ft

Stoop: 11 sq ft

**Total Area: 2,277 sq ft**

## SALES & DESIGN CENTER LOCATIONS

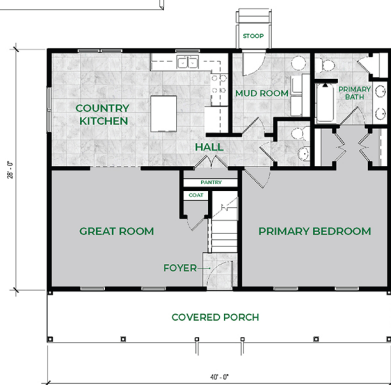
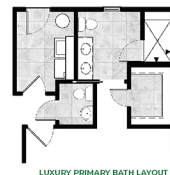
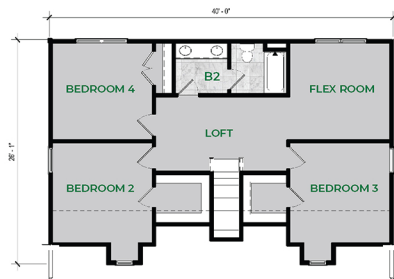
Fredericksburg, VA  
888-905-0266

Newport News, VA  
888-608-0603

Richmond, VA  
888-352-0702

Rocky Mount, NC  
888-512-3779

info@mitchellhomesinc.com



Plans and elevations are artist's renderings only, may not accurately represent the actual condition of a home as constructed, and may contain options which are not standard on all models. We reserve the right to make changes to these floor plans, specifications, dimensions, and elevations without prior notice. Stated dimensions and square footage are approximate and should not be used as representation of the home's precise or actual size.