



Elevation F

MATHEWS 2

2,392 sq ft



4 Beds



2 Baths



1 Story

DOWNLOAD FREE DIGITAL PLAN BOOK: www.mitchellhomesinc.com



Elevation G



Elevation A

MATHEWS 2 2,392 sq ft

Total Area Under Roof: 2,392 sq ft

Covered Porch: 192 sq ft

Stoop: 11 sq ft

Total Area: 2,595 sq ft

SALES & DESIGN CENTER LOCATIONS

Fredericksburg, VA
888-905-0266

Newport News, VA
888-608-0603

Richmond, VA
888-352-0702

Rocky Mount, NC
888-512-3779

info@mitchellhomesinc.com



OPTIONAL HSD ROOM LAYOUT



OPTIONAL PRIMARY BATH LAYOUT



LUXURY PRIMARY BATH LAYOUT



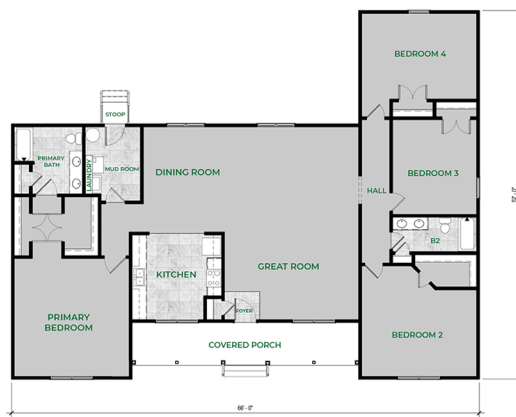
OPTIONAL KITCHEN LAYOUT



OPTIONAL KITCHEN LAYOUT 2



OPTIONAL CHIEF KITCHEN LAYOUT



Plans and elevations are artist's renderings only, may not accurately represent the actual condition of a home as constructed, and may contain options which are not standard on all models. We reserve the right to make changes to these floor plans, specifications, dimensions, and elevations without prior notice. Stated dimensions and square footage are approximate and should not be used as representation of the home's precise or actual size.