



NEIL

Elevation F

2,272 sq ft



3 Beds



2 Baths



1 Story

DOWNLOAD FREE DIGITAL PLAN BOOK: www.mitchellhomesinc.com



Elevation B

NEIL 2,272 sq ft

Living Area: 2,272 sq ft
Garage: 548 sq ft
Covered Front Porch: 23 sq ft
Covered Rear Porch: 60 sq ft
Total Area: 2,903 sq ft

SALES & DESIGN CENTER LOCATIONS

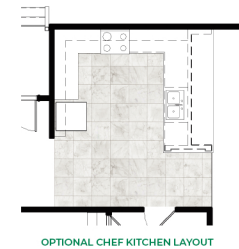
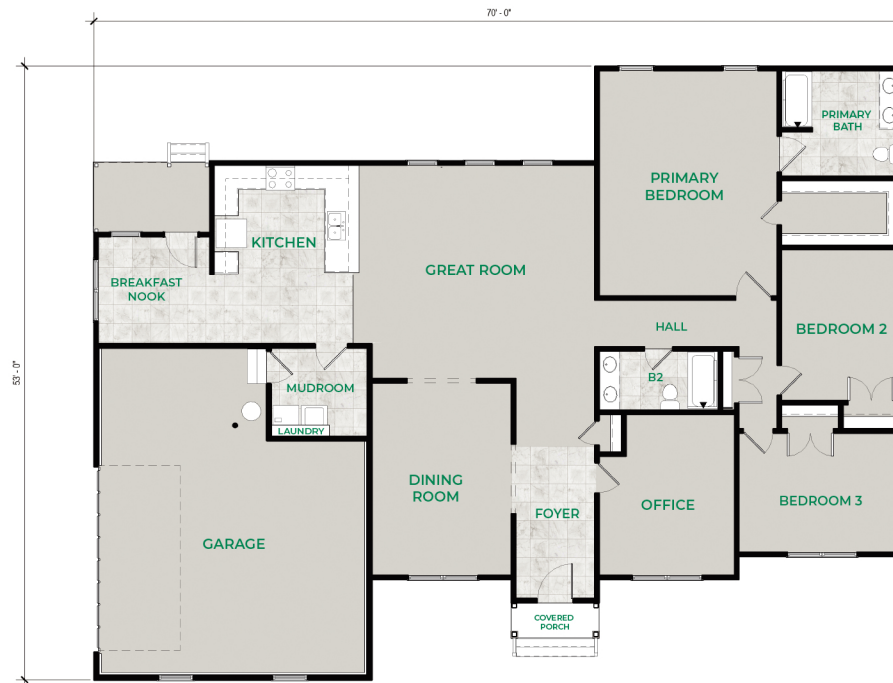
Richmond, VA
888-352-0702

Fredericksburg, VA
888-905-0266

Newport News, VA
888-608-0603

Rocky Mount, NC
888-512-3779

info@mitchellhomesinc.com



OPTIONAL CHEF KITCHEN LAYOUT



OPTIONAL PRIMARY BATH LAYOUT



LUXURY PRIMARY BATH LAYOUT

Plans and elevations are artist's renderings only, may not accurately represent the actual condition of a home as constructed, and may contain options which are not standard on all models. We reserve the right to make changes to these floor plans, specifications, dimensions, and elevations without prior notice. Stated dimensions and square footage are approximate and should not be used as representation of the home's precise or actual size.