



Elevation F

RADFORD 2,025 sq ft



3 Beds



2 Baths



2 Stories

DOWNLOAD FREE DIGITAL PLAN BOOK: www.mitchellhomesinc.com



Elevation C



Elevation B

RADFORD 2,025 sq ft

First Floor: 1,791 sq ft
Unfinished Bonus Room: 234 sq ft
Total Living Area: 2,025 sq ft

Covered Front Porch: 108 sq ft
Garage: 496 sq ft
Stoop: 12 sq ft
Total Area: 2,641 sq ft

SALES & DESIGN CENTER LOCATIONS

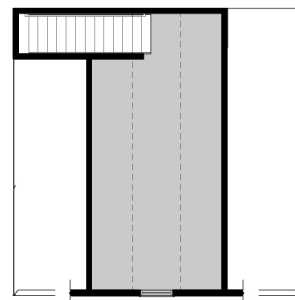
Fredericksburg, VA
888-905-0266

Newport News, VA
888-608-0603

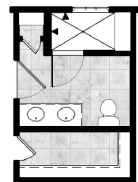
Richmond, VA
888-352-0702

Rocky Mount, NC
888-512-3779

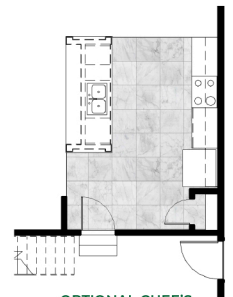
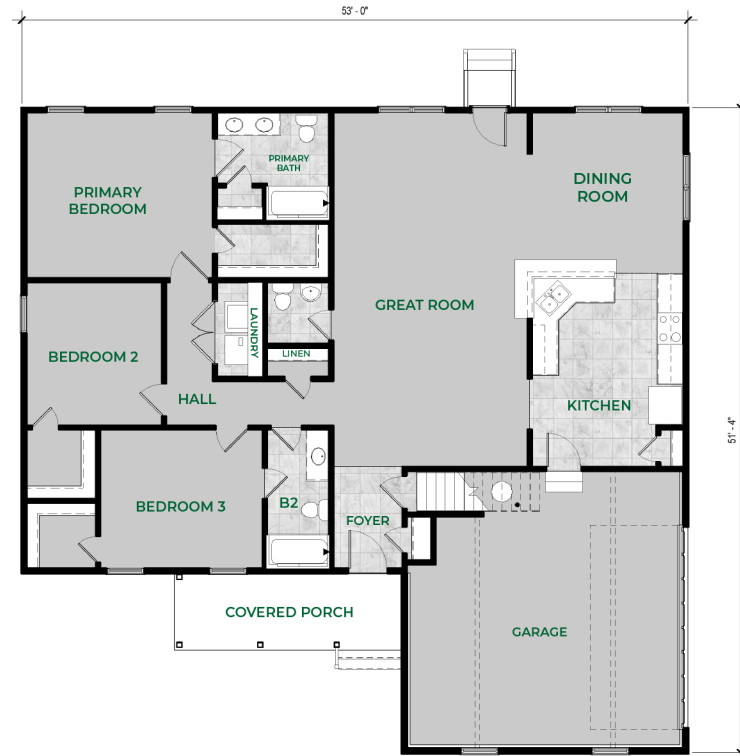
info@mitchellhomesinc.com



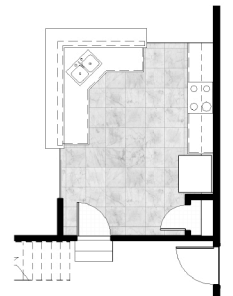
UNFINISHED
BONUS ROOM



LUXURY PRIMARY
BATH LAYOUT



OPTIONAL CHEF'S
KITCHEN LAYOUT



OPTIONAL
KITCHEN LAYOUT

Plans and elevations are artist's renderings only, may not accurately represent the actual condition of a home as constructed, and may contain options which are not standard on all models. We reserve the right to make changes to these floor plans, specifications, dimensions, and elevations without prior notice. Stated dimensions and square footage are approximate and should not be used as representation of the home's precise or actual size.