



**VINCENT** Elevation F  
1,848 sq ft

3 Beds 2 Baths 1 Story

DOWNLOAD FREE DIGITAL PLAN BOOK: [www.mitchellhomesinc.com](http://www.mitchellhomesinc.com)



Elevation B



# VINCENT

1,848 sq ft

Living Area: 1,848 sq ft

Covered Front Porch: 180 sq ft

Stoop: 12 sq ft

Total Area: 2,040 sq ft

## SALES & DESIGN CENTER LOCATIONS

Fredericksburg, VA  
888-905-0266

Newport News, VA  
888-608-0603

Richmond, VA  
888-352-0702

Rocky Mount, NC  
888-512-3779

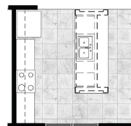
info@mitchellhomesinc.com



OPTIONAL KITCHEN LAYOUT



OPTIONAL KITCHEN 2 LAYOUT



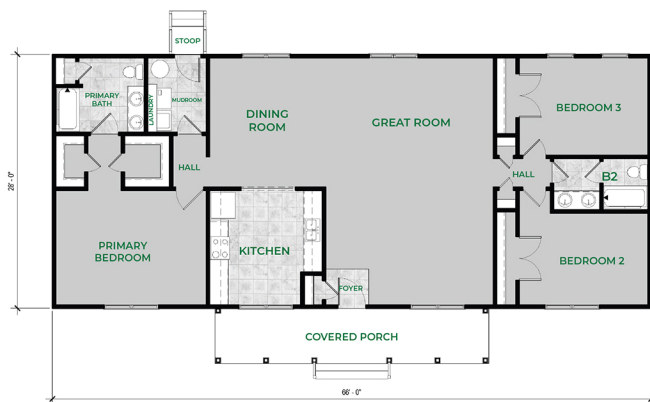
OPTIONAL CHEF'S KITCHEN LAYOUT



LUXURY PRIMARY BATH LAYOUT



OPTIONAL PRIMARY BATH LAYOUT



Plans and elevations are artist's renderings only, may not accurately represent the actual condition of a home as constructed, and may contain options which are not standard on all models. We reserve the right to make changes to these floor plans, specifications, dimensions, and elevations without prior notice. Stated dimensions and square footage are approximate and should not be used as representation of the home's precise or actual size.