



Elevation F

**WINCHESTER** 2,138 sq ft



3 Beds



2 Baths



1 Story

DOWNLOAD FREE DIGITAL PLAN BOOK: [www.mitchellhomesinc.com](http://www.mitchellhomesinc.com)



Elevation C



# WINCHESTER 2,138 sq ft

Living Area: 2,138 sq ft

Garage: 423 sq ft

Front Porch: 20 sq ft

Stoop: 12 sq ft

Total Area: 2,593 sq ft

## SALES & DESIGN CENTER LOCATIONS

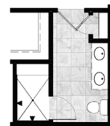
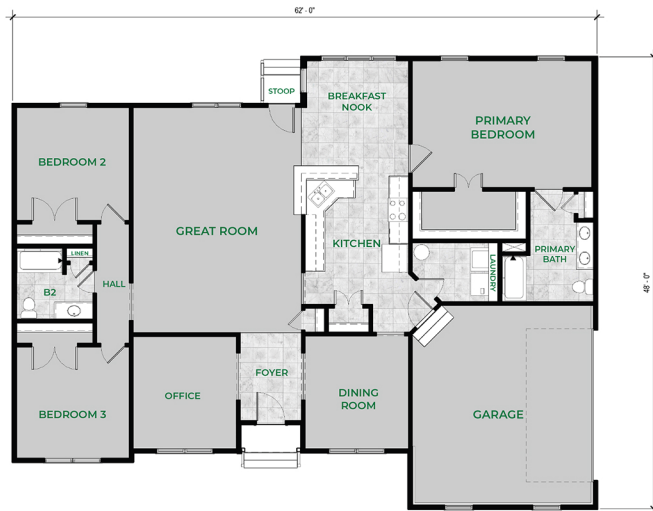
Fredericksburg, VA  
888-905-0266

Newport News, VA  
888-608-0603

Richmond, VA  
888-352-0702

Rocky Mount, NC  
888-512-3779

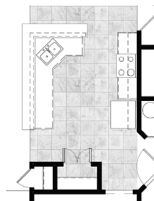
info@mitchellhomesinc.com



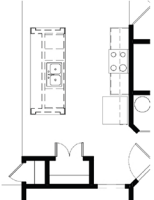
LUXURY PRIMARY BATH LAYOUT



OPTIONAL PRIMARY BATH LAYOUT



OPTIONAL KITCHEN LAYOUT



OPTIONAL KITCHEN LAYOUT 2

Plans and elevations are artist's renderings only, may not accurately represent the actual condition of a home as constructed, and may contain options which are not standard on all models. We reserve the right to make changes to these floor plans, specifications, dimensions, and elevations without prior notice. Stated dimensions and square footage are approximate and should not be used as representation of the home's precise or actual size.