



Elevation C  
**PATTERSON** 1,613 sq ft

3 Beds 2.5 Baths 2 Stories

DOWNLOAD FREE DIGITAL PLAN BOOK: [www.mitchellhomesinc.com](http://www.mitchellhomesinc.com)



Elevation A



Elevation B

# PATTERSON 1,613 sq ft

First Floor: 1,113 sq ft  
Second Floor: 500 sq ft  
**Total Living Area: 1,613 sq ft**

Covered Porch: 26 sq ft  
Stoop: 12 sq ft  
**Total Area: 1,651 sq ft**

## SALES & DESIGN CENTER LOCATIONS

Fredericksburg, VA  
888-905-0266

Newport News, VA  
888-608-0603

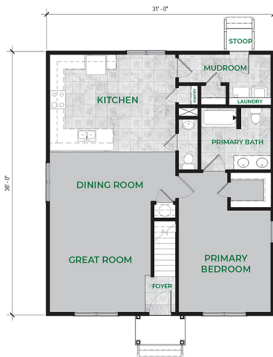
Richmond, VA  
888-352-0702

Rocky Mount, NC  
888-512-3779

info@mitchellhomesinc.com



LUXURY PRIMARY BATH LAYOUT



Plans and elevations are artist's renderings only, may not accurately represent the actual condition of a home as constructed, and may contain options which are not standard on all models. We reserve the right to make changes to these floor plans, specifications, dimensions, and elevations without prior notice. Stated dimensions and square footage are approximate and should not be used as representation of the home's precise or actual size.